

**THE KEY TO OUR
SUCCESS**

Simply put, the key to our success is you, our client. ASTAR has always been able to meet and exceed your expectations with highly original and innovated solutions at reasonable compensation.

**SOLUTIONS THAT
MAKE SENSE!**

Additional Services Offered include:

- Asbestos Remediation
- Microbial Remediation
- Insulation Services
- PCB Light Ballast & Mercury Light
- Disposal
- Energy Management



Free Estimates

Competitive Bid Response

Emergency On-Call

Fixed, Unit Price, or T&M Contracts

Operations & Maintenance Programs

Fully Bonded and Insured

ASTAR ABATEMENT, INC.

West Virginia
PO Box 13533
Charleston, WV 25360

Phone: 304-984-4030
Fax: 304-984-4031
Email: astarinc@earthlink.net

North Carolina
209-A West Armfield Street
St. Pauls, NC 28384

Phone: 910-865-2608
Fax: 910-865-1218



ASTAR ABATEMENT, INC.

**LEAD-BASED PAINT
ABATEMENT
SERVICES**

**Q U A L I T Y
E X P E R I E N C E
W O R K M A N S H I P**



**C O R P O R A T E O F F I C E :
3 0 4 - 9 8 4 - 4 0 3 0**

WHY ASTAR ABATEMENT, INC?

CAN YOU AFFORD TO TAKE CHANCES WHEN SELECTING AN ASBESTOS ABATEMENT CONTRACTOR?

Astar Abatement, Inc. (ASTAR) is headquartered near Charleston, West Virginia. The strategic location at the confluence of 3 major Interstates, allows us to provide efficient service to our clients. In addition, our branch office in St. Pauls, NC provides key services to the nearby military facilities.



From the smallest residential project, to full-scale industrial, commercial and emergency work,

the key to our success has always been the ability of our staff to meet a wide variety of industrial problems with innovative solutions. Our ability to relate and react to the changing needs of our clients is critical to our performance and we place a high priority on satisfying those needs.

LEAD IN YOUR HOME

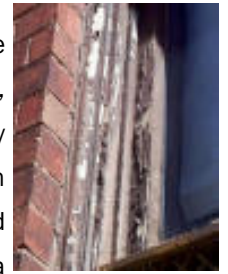
Lead is highly toxic. Exposure to it can be dangerous, especially for children who are 6 or younger. But lead is stable and easy to work with, so it has been used for many purposes in our homes.

Lead-based paint was used in most homes until 1960, and still used in some house paints until 1977. In fact, lead is still used in the pigment of paint today, but at a much lower level. Paint at friction points on window and door frames, and peeling paint on porches is most likely to present an exposure risk for children.

Small children will put anything into their mouths. They crawl on the floor below windows that have been raised up and down, get paint dust on their fingers and then put those fingers in their mouths. Even old furniture, toys, and dishes may contain lead.



Lead builds up in the body over time. Therefore, someone who takes in only small amounts of lead can gradually develop lead poisoning. Lead carried in a mother's blood could pass to her unborn child. Lead poisoning is usually a silent disease, and an affected person may seem to be well. A blood lead level test can determine if someone has taken in too much lead, before there are any outward signs of illness. Some of these signs include: irritability, loss of appetite, weight loss, reduced attention span, difficulty sleeping, persistent tiredness or hyperactivity.



At ASTAR ABATEMENT, INC., we can help you solve your lead-based paint problems. Call us for a no cost—no obligation appraisal of how we can meet your needs.

ASTAR has a proven record of quick response to asbestos control. We've completed hundreds of job and have never received a Notice of Violation or Citation from any regulatory agency. There's no doubt we have seen your situation, and can offer an efficient and economical solution.

